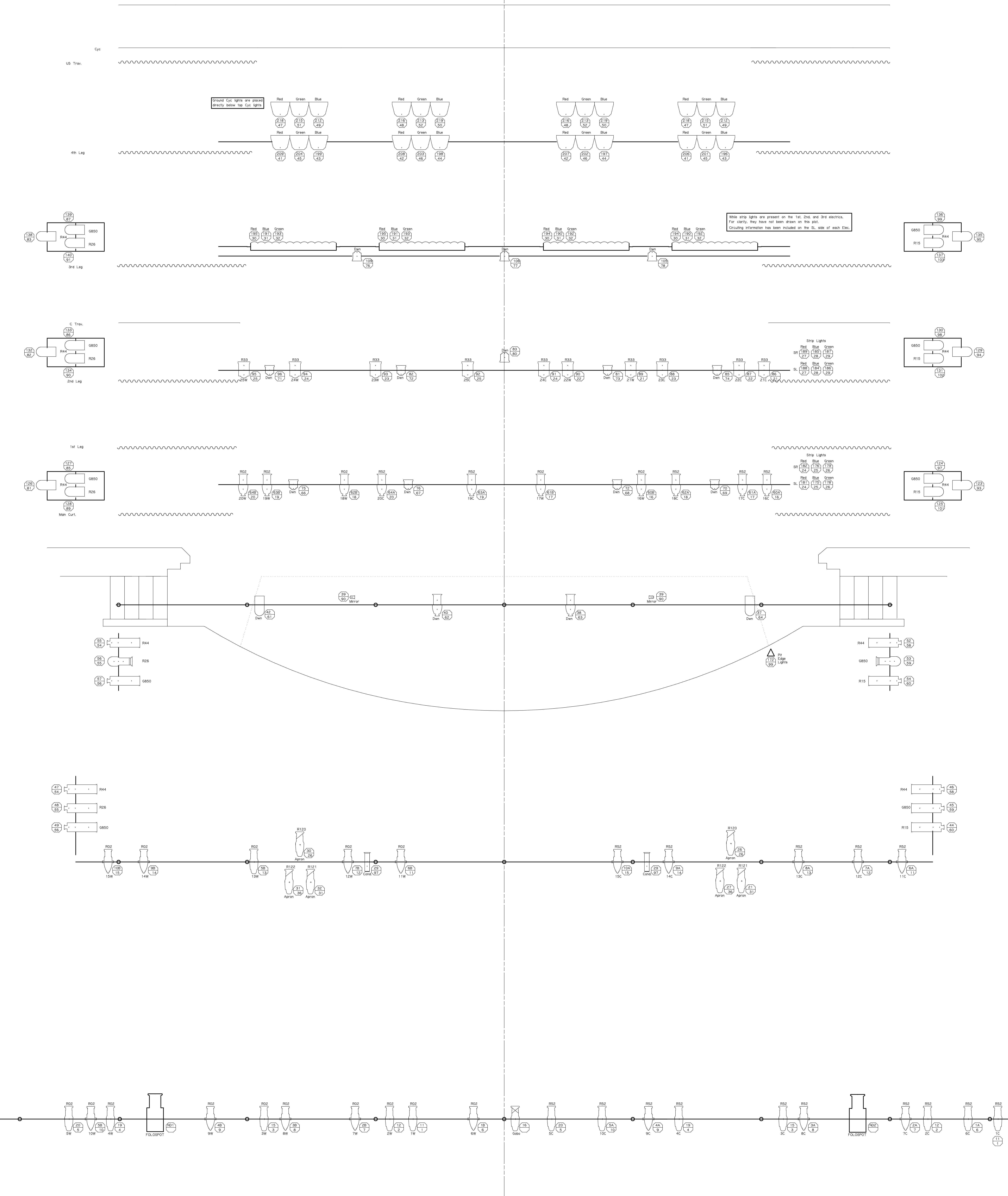
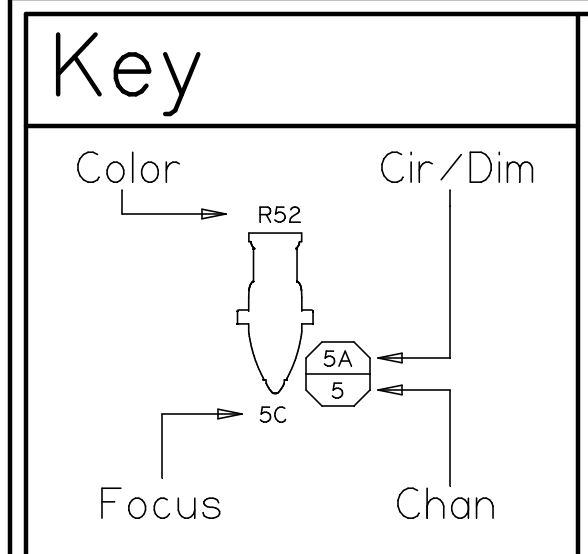


CL



Ground Cyc lights are placed directly below top Cyc lights

While Strip lights are present on the 1st, 2nd, and 3rd electric, for clarity, they have not been drawn on this plot. Circulating information has been included on the SL side of each Elec.



- Strand SL - 19°
- Strand 6x9
- Source 4 - 19°
- Source 4 - 36°
- Source 4 - 36° HDL
- PAR 64
- Strand 6x22
- Berkey 6x9
- Strand 6' Zoom
- Strand 4.5' Zoom
- 8' Fresnel
- 6' Fresnel
- Pin Spot
- Strand 4.5' Zoom
- 6' 4-Channel Striplight
- Follow Spot
- 3-Cell Cyc Light

FF = Front Fill
 Cond = Conductor
 Mirror = Mirror Ball
 Apron = Apron Color Wash

PAC Rep Light Plot

Highline Performing Arts Center

Scale: 1/2" = 1'-0"

Drafted by: D. Wolcott 7/22/2013

(206) 631-6796

*Fixture placement not to scale L -> R on Pipes